



# Double Ridge Waveguide High Power Termination

## Description

We are proud to provide a wide range of double ridge waveguide high power terminations covering bands from 1 GHz to 40 GHz. Our double ridge waveguide terminations are featured with full band operation, deep matching, and high-power handling capability.

## Applications

- **High Power combiner assembly**
- **Radar systems**
- **RF Source Protection**

## Electrical Specifications

- Partial bands are available upon request with better electrical characteristics and customized solutions.
- Pressurized and TVAC units are available based on the client requirement.
- WRD250S/WRD600 are SMC special designed double ridge waveguide structures that cover extremely wide band 3:1.
- WRD600P is an SMC special designed double ridge waveguide structure with exceptional high-power handling capability.

## Mechanical Specifications

**Material:** Aluminum 6061 / Copper / Brass  
**Finish:** Chromate/Plated  
**Paint:** As per request

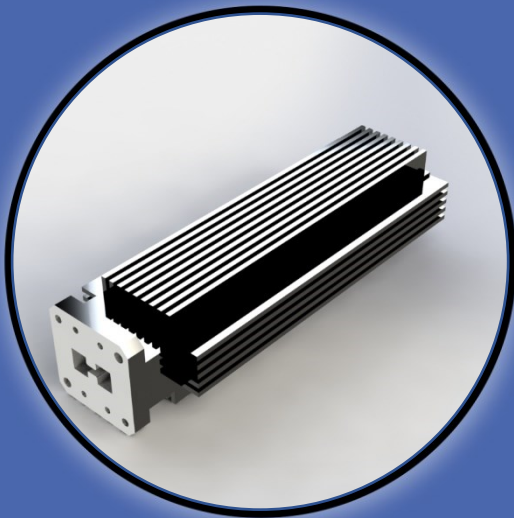
### Contact Info :

**Address:**  
5790 rue Donahue,  
St-Laurent, QC  
Canada, H4S 1C1

**Phone:**  
(+1) 514-664-5790

**Website:**  
[www.smcq.com](http://www.smcq.com)

**email:**  
[info@smcq.com](mailto:info@smcq.com)



## Electrical Specifications

Model Number	Waveguide Size	Frequency	VSWR	Power (W)
<b>SMC-152D840</b>	WRD840	0.84-2.00 GHz	1.15:1	1500
<b>SMC-152D200</b>	WRD200	2.00-4.80 GHz	1.15:1	1000
<b>SMC-152D250S*</b>	WRD250S	2.50-7.50 GHz	1.15:1	750
<b>SMC-152D250</b>	WRD250	2.60-7.80 GHz	1.15:1	750
<b>SMC-152D350</b>	WRD350	3.50-8.20 GHz	1.15:1	500
<b>SMC-152D475</b>	WRD475	4.75-11.00 GHz	1.15:1	500
<b>SMC-194D500</b>	WRD500	5.00-18.00 GHz	1.15:1	500
<b>SMC-152D580</b>	WRD580	5.80-16.00 GHz	1.15:1	500
<b>SMC-152D600P*</b>	WRD600P	6.00-12.00 GHz	1.15:1	1000
<b>SMC-152D600*</b>	WRD600	6.00-18.00 GHz	1.15:1	500
<b>SMC-152D650</b>	WRD650	6.50-18.00 GHz	1.15:1	500
<b>SMC-152D750</b>	WRD750	7.50-18.00 GHz	1.15:1	750
<b>SMC-152D180</b>	WRD180	18.00-40.00 GHz	1.30:1	100